



CONTEXT OF THE REVIEW

G SALMON

CONTEXT OF THE REVIEW

- March 2006:
 - Review began
 - Much discussion
 - Proposals now tabled
- Children at the centre
- Strategic Review for 1st half of the 21st century
- What is known
- What is projected
- Process of change



Isabella 29/12/2006 Charlotte 05/05/2003

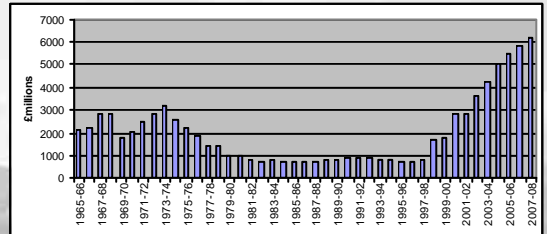
- Children born on 1st January 2008 may access early years provision in September 2011
- Reception in September 2012
- High School in September 2019
- Choose Diploma Options in September 2021

We are planning provision for that child and his/her 1700 peers to maximise opportunities and improve life-chances

OPPORTUNITY TO TAKE STRATEGIC VIEW

- Improving the Learning Entitlement
- Delivering the wider ECM Agenda
- Not unique to Herefordshire
- Not a reflection on individual schools but on the overall system of provision in county
- Building Schools for the Future
- Primary Strategy for Change
- Government Funding

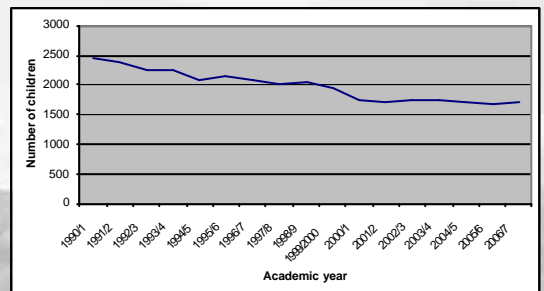
Capital Investment in Britain's schools, 1965 - 2008



FACTS - DEMOGRAPHIC

- Known children aged 0-1 in 1990/91 2502
- Known children aged 0-1 in 2006/07 1752
- Current Yr 11 2023 from cohort of 2441
Yr R 1642 from cohort of 1754
- In-Migration between mid 2005 and mid 2006 estimated net gain of 100 0-4 yr olds
 - 400 moved in
 - 300 moved out
- Housing 16,600 units 830 p/a compared to 780 p/a

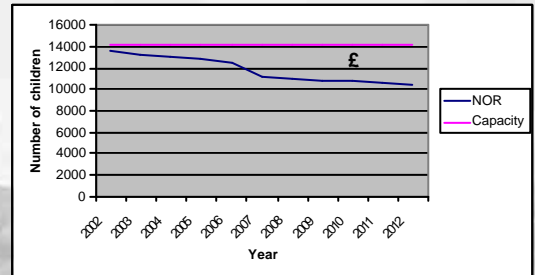
Number of known children aged 0-1 in Herefordshire



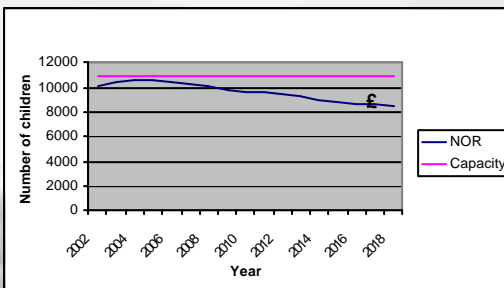
PROJECTIONS – DEMOGRAPHIC (to date)

- Primary pupil down from 12,359 in 2007 to below 11,500 in 2012
- Secondary students down from 10,170 in 2007 to below 8,500 in 2018
- Number of those aged 0-1 to fall to 1500 in 2011 (subject to further work).
- International In-migration = Out-migration
- Housing 16,600 units by 2026, anticipated 50% in Hereford City and many others in market towns and larger settlements

Herefordshire Primary School Projected Numbers on Roll



Herefordshire High School Projected Numbers on Roll



FACTS - FINANCIAL

- Dedicated Schools Grant based on number of pupils
- Higher than schools inflation per pupil increase (3.9% - 4.5%)
- Lower than inflation real term cash increases (2.1% - 3.1%)

2006/07 allocation £78,200,000

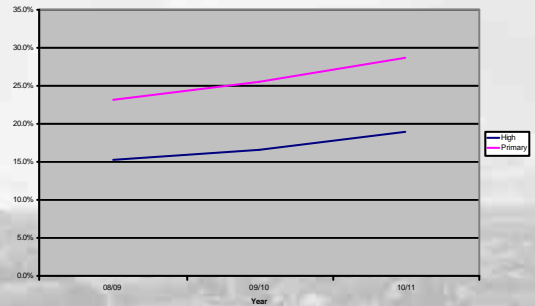
2007/08 allocation £82,500,000

2008/09 allocation £84,500,000

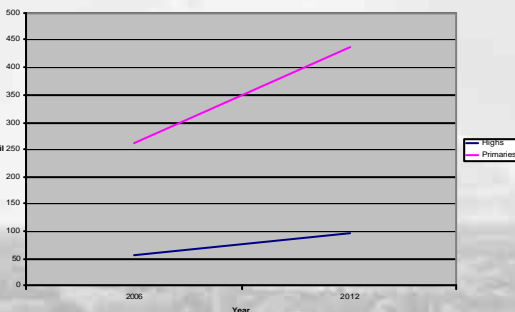
PROJECTIONS - FINANCIAL

- Currently Small School Protection frozen because otherwise would rise
 - By 68% from £260 per primary pupil in 2006 to £437 per pupil in 2012/3
 - And 74% from £55 per high school pupil in 2006 to £96 in 2012
- Fixed costs to rise as share of reducing budget
 - Primary 23.1% in 2006, 25.4% in 2012 and 28.6% in 2020
 - High 15.2% in 2006, 16.67% in 2012 and 18.9% in 2020

Increasing Fixed costs



Costs of small schools protection



FACTS - BUILDINGS

- 22,529 pupils in 95 schools with capacity of 25,653
- Outstanding maintenance approx £12m
- Energy Costs £1,500,000
- Total number of temporary classrooms:
 - 23 x Singles; 14 x Doubles; 2 x Triples used by schools in the Primary Sector
 - 8 x Singles; 20 x Doubles; 5 x Triples used by schools in the Secondary Sector

PROJECTIONS - BUILDINGS

- By 2012 20,886 pupils in 95 schools with capacity of 25,653
- Surplus space to rise
- Energy Costs projected to increase above inflation 4% on gas
- More Vocational Provision needed

CHANGE

- Change is needed
- Status quo will not deliver the higher expectations across the board
- Resources tied into fixed costs
- DCSF delay on capital approvals

PRINCIPLES OF SCHOOL PROVISION

- The Best for All of Herefordshire's Children and Young People
- Equity
- Partnership
- Diversity
- Leadership
- Additional Needs
- Resources
- A Community of Schools
- Schools within their Community

THE REVIEW CENTRES ON THE "HOW" AND THE EFFECTIVE USE OF RESOURCES

- Removing unnecessary costs within the system
- Reducing fixed costs both staffing and building costs
- Removing costs associated with surplus space
- Aim to retain maximum of 8% surplus spaces across the county to allow for future change
- Cost of change acknowledged including
 - Additional transport costs
 - Redundancy
 - Capital investment

EFFECTIVE USE OF RESOURCES CONTINUED

- Require agreement with DCSF on Building Schools for the Future & Primary Strategy for Change
- Dedicated Schools Grant is Safeguarded
- Resources for Capital Strategy to be determined taking into account BSF, Primary Strategy for Change, capital receipts, Prudential borrowing & developers contributions

MANAGING CHANGE

- School Improvement Agenda to be maintained
- Performance to continue to improve
- Ofsted Inspection continues
- Good communication
- Robust and Professional Debate
- Support for Staff
- Leadership at Local Authority and School Level

STRATEGY INCLUDES

- Changes in LMS Scheme
- Changes in admissions numbers
- Changes in Catchment Areas (defined by Post-code)
- Capital Investment
- School amalgamations
- Removal of temporary accommodation in long term albeit with an increase in period of change

PROGRAMME INVOLVES

- Changes to be brought into effect for September 2009
- Longer Term changes in the Primary Strategy for Change and Building Schools for the Future to be effective from September 2010
- LA as Commissioner not Provider
 - Amalgamation as preferred means
 - Parental preference
 - Status of schools to be determined
 - Rurality (there may be more empty spaces in schools in rural than urban areas)
 - Presumption against closure of rural schools



Review of School Places Provision



Isabella 29/12/2006 Charlotte 05/05/2003

Secondary County before Proposals

- Current Capacity 10939 (post 16 - 490)
- Current NOR 10170 (post 16 - 450)
- Current Surplus 769, 7% (post 16 – 40, 8.2%)

- 2012 Projected NOR 9460 (post 16 - 462)
- 2012 Projected Surplus 1479, 13.5% (post 16 – 28, 5.7%)

- 2018 Projected NOR 8492 (post 16 - 408)
- 2018 Projected Surplus 2447, 22.4% (post 16 – 82, 16.7%)

Secondary Sector Summary

- Reduce 11-16 capacity by 849
 - 11-16 PAN reduced by 170

- Increase post 16 capacity by 160
 - 16-18 PAN increased by 80

- Amalgamation of 4 schools to form 2 new schools

- Closure of 1 sixth form

- Open 1 sixth form

Secondary Sector - Proposals

- **Aylestone School – Business & Enterprise College**
 - Reduction in capacity to 900 (PAN 180) from 1175 (235)
- **Bishop of Hereford's Bluecoat**
 - Reduction in capacity to 1050 (PAN 210) from 1175 (236)
- **Weobley High**
 - Reduction in capacity to 450 (PAN 90) from 500 (100)

Secondary Sector - Proposals

- **St Mary's RC High**
 - Increase in capacity to 750 (PAN 150) from 675 (135)
- **The John Masfield High**
 - Increase in capacity to 900 (PAN 180) from 870 (174)
 - Retain post 16 capacity 180 (90)

Secondary Sector - Proposals

- **Whitecross High School & Specialist Sports College**
 - Retain capacity of 900 (PAN 180)
- **Wigmore High**
 - Retain capacity of 450 (PAN 90)
- **John Kyrle High School & Sixth Form Centre**
 - Retain capacity of 1050 (PAN 210)
 - Retain post 16 capacity 150 (PAN 75)

Secondary Sector - Proposals

- **The Minster College & Queen Elizabeth Humanities College**
 - Amalgamation to create a High School to serve North Herefordshire, capacity 900 (PAN 180) from 700 (140) and 500 (100) respectively
 - Increase in post 16 capacity to 120 (60) from 100 (50)
 - New build BSF school on The Minster site

Secondary Sector - Proposals

- **Lady Hawkins High**
 - Retain capacity of 450 (PAN 90)
 - Closure of sixth form capacity 60 (PAN 30)

Secondary Sector - Proposals

- **Wyebridge Sports College**
 - Retain capacity of 900 (PAN 180)
 - Open post 16, capacity 200 (PAN 100)
 - Change to academy status with post 16

Secondary Sector - Proposals

- **Fairfield High & Kingstone High**
 - Amalgamation to create a High School to serve the Golden Valley, capacity 900 (PAN 180) from 350 (70) & 680 (136) respectively – Site to be determined

Secondary Sector after Proposals

- Revised Capacity 10050 (post 16 - 450)
- 2012 Projected NOR 9460 (post 16 - 462)
- 2012 Projected Surplus 590, 5.9% (post 16 – <5%)
- 2018 Projected NOR 8492 (post 16 - 408)
- 2018 Projected Surplus 1558, 15.5% (post 16 – 42, 9.3%)



Isabella 29/12/2006 Charlotte 05/05/2003

Primary County before Proposals

- Current Capacity 14714
- Current NOR 12359
- Current Surplus 2355 (16.0%)

- 2012 Projected NOR 11426
- 2012 Projected Surplus 3288 (22.3%)

Primary Sector Summary

Overview of proposed changes

- Reduction in capacity by 2233 places (15.2%)
 - Equivalent of reduction in PAN by 319 year on year
- Amalgamation of 35 schools to form 17 new (renamed) schools
 - Formation of 1 ecumenical school
 - Formation of one all-through primary from Infant's and Juniors
 - Denominational status of schools to be determined
- Reduction in PAN for 16 schools
- Refurbishment of 50% of Herefordshire Primary schools and rebuild of 5 worst school buildings
- Timescale for change September 2009 unless otherwise stated

Primary Sector after Proposals

- Revised Capacity 12481
- 2012 Projected NOR 11426
- Revised 2012 county Projected Surplus 1055 (8.5%)

- Catchment by catchment focus – 14 areas in all

Queen Elizabeth Catchment before Proposals

6 schools serving 626 pupils (730 known children) in an area of 222km².

School	Capacity	PAN
St. Peter's	210	30
Burley Gate CE	140	20
Bredenbury	70	10
Pencombe CE	56	8
Brockhampton	182	26
Whitbourne CE	70	10

The Minster College Catchment before Proposals

7 schools serving 1043 pupils (1230 known children) in an area of 198km².

School	Capacity	PAN
Wington CE	105	15
Leominster Infants	330	110
Leominster Junior	440	110
Luston	140	20
Kimbolton, St. James' CE	105	15
Stoke Prior CE	77	11
St. Michael's CE	119	17

Queen Elizabeth Catchment before Proposals

- Current Capacity 728
- Current NOR 626
- Current Surplus 102 (14%)
- 2012 Projected NOR 590
- 2012 Projected Surplus 138 (19%)

The Minster College Catchment before Proposals

- Current Capacity 1316
- Current NOR 1043
- Current Surplus 273 (20.7%)
- 2012 Projected NOR 990
- 2012 Projected Surplus 326 (24.8%)

North Herefordshire Catchment - Proposals

- **Bredenbury Primary & Pencombe CE Primary**
 - Amalgamation to form a new school, capacity 105 (PAN 15) from 70 (10) and 56 (8) respectively – on Bredenbury site
- **Brockhampton Primary & Whitbourne CE Primary**
 - Amalgamation to form a new school, capacity 210 (PAN 30) from 182 (26) and 70 (10) respectively – new build in Whitbourne
 - Timescale: 2010

North Herefordshire Catchment - Proposals

- **Leominster Infants & Junior**
 - Amalgamation to form a new primary school
 - New build with capacity of 630 (PAN 90) from 770 (110)
- **Burley Gate CE Primary**
 - Reduce capacity from 140 (PAN 20) to 105 (PAN 15)
 - Move to Aylestone catchment
- **Stoke Prior CE Primary**
 - Reduce capacity from 77 (11) to 70 (PAN 10)

North Herefordshire Catchment - Proposals

- **St. Michael's CE Primary**
 - Reduce capacity from 119 (17) to 105 (PAN 15)
- **St Peter's Primary**
 - Retain capacity 210 (PAN 30)
- **Ivington CE Primary**
 - Retain capacity of 105 (PAN 15)

North Herefordshire Catchment - Proposals

- **Luston Primary**
 - Retain capacity of 140 (PAN 20)
- **Kimbolton, St. James CE Primary**
 - Retain capacity of 105 (PAN 15)

The North Herefordshire Catchment after Proposals

- Revised Capacity 1680
- 2012 Projected NOR 1498
- Revised 2012 Projected Surplus 182 (10.8%)

The North Herefordshire Catchment after Proposals

9 schools serving 1770 known children in an area of 360km²

School	Capacity	PAN
Kington CE	105	15
Leominster Infants & Leominster Junior	630	90
amalgamation		
Luston	140	20
Kimbolton, St. James CE	105	15
Stoke Prior CE		Reduction in capacity (20, PAN 10)
St. Michael's CE		Reduction in capacity (105, PAN 15)
Bredenbury & Pencombe CE amalgamation	105	15
Erockhampton & Whitbourne CE	210	30
amalgamation		
St. Peter's	210	30

John Kyrie Catchment before Proposals

12 schools serving 1429 pupils (1660 known children) in an area of 262km²

School	Capacity	PAN	School	Capacity	PAN
Brampton Abbots CE	140	20	Ashfield Park	476	68
Bridstow CE	105	15	Goodrich CE	119	17
Kings Cagle	70	10	Gorstley Goffs Endowed	175	25
Lea CE	105	15	Weston-under-Penyard CE	91	13
Langrove CE	105	15	Whitchurch CE	119	17
St. Weonard's	105	15	Walford	196	28

John Kyrie Catchment before Proposals

- Current Capacity 1806
- Current NOR 1429
- Current Surplus 377 (20.9%)
- 2012 Projected NOR 1155
- 2012 Projected Surplus 651 (36.0%)

John Kyrle Catchment - Proposals

- **Brampton Abbots CE Primary & St Joseph's RC Primary**
 - Amalgamation to form a new ecumenical school, capacity 210 (PAN 30) from 140 (20) and 140 (20) respectively – on Brampton Abbots site
- **Kings Caple Primary & Little Dewchurch CE Primary**
 - Amalgamation to form a new school, capacity 70 (PAN 10) from 70 (10) and 63 (8) respectively - on the Little Dewchurch site (Wyebridge catchment)
- **Lea CE Primary & Weston-under-Penyard CE Primary**
 - Amalgamation to form a new school, capacity 140 (PAN 20) from 105 (15) and 91 (13) respectively – on Lea site

John Kyrle Catchment - Proposals

- **Llangrove CE Primary & Whitchurch CE Primary**
 - Amalgamation to form a new school, capacity 105 (PAN 15) from 105 (15) and 119 (17) respectively – on Whitchurch site
- **St Weonard's Primary & Garway Primary**
 - Amalgamation to form a new school, capacity 105 (PAN 15) from 105 (15) and 105 (15) respectively – on Garway site
- **Goodrich CE Primary**
 - Reduce capacity from 119 (17) to 105 (PAN 15)

John Kyrle Catchment - Proposals

- **Gorsley Goffs Endowed Primary**
 - Reduce capacity from 175 (25) to 140 (PAN 20)
- **Ashfield Park Primary**
 - Reduce capacity from 476 (68) to 420 (PAN 60)
- **Bridstow CE Primary**
 - Retain capacity of 105 (PAN 15)
- **Walford Primary**
 - Retain capacity of 196 (PAN 28)

John Kyrle Catchment after Proposals

- Revised Capacity 1526
- 2012 Projected NOR 1262
- Revised 2012 Projected Surplus 264 (17.3%)

John Kyrle Catchment after Proposals

9 schools serving 1630 known children in an area of 259km²

School	Capacity	PAN	School	Capacity	PAN
Brampton Abbots CE & St Joseph's RC amalgamation	210	30	Ashfield Park	Reduction in capacity (420, PAN 60)	
Bridstow CE	105	15	Goodrich CE	Reduction in capacity (105, PAN 15)	
Llangrove CE & Whitchurch CE amalgamation	105	15	Gorsley Goffs Endowed	Reduction in capacity (140, PAN 20)	
Lea CE & Weston-under-Penyard CE amalgamation	140	20	Walford	196	28
Garway & St. Weonard's amalgamation	105	15			

Kingstone Catchment before Proposals

6 schools serving 850 pupils (720 known children) in an area of 216km²

School	Capacity	PAN
Cleghonger CE	196	28
Kingstone & Thrupton	210	30
Ewyas Harold	140	20
Garway	105	15
Madley	168	21
Much Birch CE	196	28

Fairfield Catchment before Proposals

4 schools serving 252 pupils (300 known children) in an area of 215km²

School	Capacity	PAN
Longtown	56	8
Clifford	70	10
Michaelchurch Escley	56	8
Peterchurch	105	15

Kingstone Catchment before Proposals

- Current Capacity 1015
- Current NOR 850
- Current Surplus 165 (16.3%)
- 2012 Projected NOR 758
- 2012 Projected Surplus 257 (25.3%)

Fairfield Catchment before Proposals

- Current Capacity 287
- Current NOR 252
- Current Surplus 35 (12.2%)

- 2012 Projected NOR 235
- 2012 Projected Surplus 52 (18.1%)

Golden Valley Catchment - Proposals

- **Cleghonger CE Primary & Kingstone & Thruxton Primary**
 - Amalgamation to form a new school, capacity 210 (PAN 30) from 196 (28) and 210 (30) respectively – on Kingstone & Thruxton site
- **Ewyas Harold Primary & Longtown Primary**
 - Amalgamation to form a new school, capacity 140 (PAN 20) from 140 (20) and 56 (8) respectively – on Ewyas Harold site
- **Michaelchurch Escley & Peterchurch Primary**
 - Amalgamation to form a new school, capacity 140 (PAN 20) from 56 (8) and 105 (15) respectively – on Peterchurch site

Golden Valley Catchment - Proposals

- **Garway Primary & St. Weonard's Primary**
 - Amalgamation to form a new school, capacity 105 (PAN 15) from 105 (15) and 105 (15) respectively – on Garway site (John Kyrle catchment)
- **Much Birch CE Primary**
 - Reduce capacity from 196 (28), to 140 (PAN 20)
 - Move to Wyebridge catchment
- **Madley Primary**
 - Retain capacity of 168 (PAN 24)
- **Clifford Primary**
 - Retain capacity of 70 (PAN 10)

Golden Valley Catchment after Proposals

- Revised Capacity 728
- 2012 Projected NOR 728
- Revised 2012 Projected Surplus <5%

Golden Valley Catchment after Proposals

5 schools serving 790 known children in an area of 368km²

School	Capacity	PAN
Kingstone and Thruxton & Clehonger CE amalgamation	210	30
Ewys Harold & Longtown amalgamation	140	20
Madley	168	24
Clifford	70	10
Peterchurch & Michaelchurch Escley amalgamation	140	20

Weobley Catchment before Proposals

5 schools serving 509 pupils (760 known children) in an area of 149km²

School	Capacity	PAN
Canon Pyon CE	91	13
Dilwyn CE	56	8
Weobley	210	30
Credenhill, St. Mary's CE	210	30
Staunton-on-Wye Endowed	70	10

Weobley Catchment before Proposals

- Current Capacity 637
- Current NOR 509
- Current Surplus 128 (20.1%)
- 2012 Projected NOR 431
- 2012 Projected Surplus 206 (32.3%)

Weobley Catchment - Proposals

- **Canon Pyon CE Primary & Dilwyn CE Primary & Weobley Primary**
 - Amalgamation to form a new school, capacity 210 (PAN 30) from 91 (13), 56 (8) and 210 (30) respectively – on Weobley site.
- **Credenhill, St Mary's CE Primary**
 - Retain capacity of 210 (PAN 30)
- **Staunton-on-Wye Endowed Primary**
 - Retain capacity of 70 (PAN 10)
 - Proceed with new build

Weobley Catchment after Proposals

- Revised Capacity 490
- 2012 Projected NOR 431
- Revised 2012 Projected Surplus 59 (12.0%)

Weobley Catchment after Proposals

3 schools serving 700 known children in an area of 144km²

School	Capacity	PAN
Canon Pyon CE, Dilwyn CE & Weobley amalgamation	210	30
Credenhill, St. Mary's CE	210	30
Staunton-on-Wye Endowed	70	10

Wigmore Catchment before Proposals

5 schools serving 588 pupils (510 known children) in an area of 244km²

School	Capacity	PAN
Kingsland CE	126	18
Leintwardine Endowed	105	15
Orleton CE	210	30
Shobdon	70	10
Wigmore	210	30

Wigmore Catchment before Proposals

- Current Capacity 721
- Current NOR 588
- Current Surplus 133 (18.4%)
- 2012 Projected NOR 523
- 2012 Projected Surplus 198 (27.5%)

Wigmore Catchment - Proposals

- **Shobdon Primary & Pembridge CE Primary**
 - Amalgamation to form a new school, capacity 105 (PAN 15) from 70 (10) and 91 (13) respectively – on Pembridge site (Lady Hawkins catchment)
- **Kingsland CE Primary**
 - Retain capacity of 126 (PAN 18)
- **Leintwardine Endowed Primary**
 - Retain capacity of 105 (PAN 15)

Wigmore Catchment - Proposals

- **Orleton CE Primary**
 - Retain capacity of 210 (PAN 30)
- **Wigmore School (Primary)**
 - Retain capacity of 210 (PAN 30)

Wigmore Catchment after Proposals

- Revised Capacity 581
- 2012 Projected NOR 483
- Revised 2012 Projected Surplus 98 (16.9%)

Wigmore Catchment after Proposals

4 schools serving 450 known children in an area of 280km²

School	Capacity	PAN
Kingsland CE	126	18
Leintwardine Endowed	105	15
Orleton CE	210	30
Wigmore	210	30

Lady Hawkins Catchment before Proposals

4 schools serving 441 pupils (550 known children) in an area of 204km²

School	Capacity	PAN
Almeley	63	9
Eardisley CE	105	15
Kington	210	30
Pembridge CE	91	13

Lady Hawkins Catchment before Proposals

- Current Capacity 469
- Current NOR 441
- Current Surplus 28 (6.0%)
- 2012 Projected NOR 423
- 2012 Projected Surplus 46 (9.8%)

Lady Hawkins Catchment - Proposals

- **Almeley Primary & Eardisley CE Primary**
 - Amalgamation to form a new school, capacity 140 (PAN 20) from 63 (9) and 105 (15) respectively – on Eardisley site
- **Pembridge CE Primary & Shobdon Primary**
 - Amalgamation to form a new school, capacity 105 (PAN 15) from 91 (13) and 70 (10) respectively - on the Pembridge site
- **Kington Primary**
 - Retain capacity of 210 (PAN 30)

Lady Hawkins Catchment after Proposals

- Revised Capacity 455
- 2012 Projected NOR 455
- Revised 2012 Projected Surplus <5%

Lady Hawkins Catchment after Proposals

3 schools serving 600 known children in an area of 220km²

School	Capacity	PAN
Almeley & Eardisley CE amalgamation	140	20
Kington	210	30
Pembridge CE & Shobdon amalgamation	105	15

John Masefield Catchment before Proposals

7 schools serving 1191 pupils (1350 known children) in an area of 216km²

School	Capacity	PAN
Ashperton	175	25
Bosbury CE	140	20
Eastnor Parochial	84	12
Colwall CE	196	28
Cradley CE	140	20
Ledbury	420	60
Much Marcle CE	119	17

John Masefield Catchment before Proposals

- Current Capacity 1274
- Current NOR 1191
- Current Surplus 83 (6.5%)
- 2012 Projected NOR 1063
- 2012 Projected Surplus 211 (16.6%)

John Masefield Catchment - Proposals

- **Bosbury CE Primary & Eastnor Parochial Primary**
 - Amalgamation to form a new school, capacity 140 (PAN 20) from 140 (20) and 84 (12) respectively – on Bosbury site
- **Cradley CE Primary**
 - Reduce capacity from 140 (20) to 105 (PAN 15)
- **Much Marcle CE Primary**
 - Reduce capacity from 119 (17) to 105 (PAN 15)

John Masefield Catchment - Proposals

- **Ashperton Primary**
 - Retain capacity of 175 (PAN 25)
- **Colwall CE Primary**
 - Retain capacity of 196 (PAN 28)
- **Ledbury Primary**
 - Retain capacity of 420 (PAN 60)

John Masefield Catchment after Proposals

- Revised Capacity 1141
- 2012 Projected NOR 1063
- Revised 2012 Projected Surplus 78 (6.8%)

John Masefield Catchment after Proposals

6 schools serving 1430 known children in an area of 247km²

School	Capacity	PAN
Ashperton	175	25
Bosbury CE & Eastnor Parochial amalgamation	140	20
Colwall CE	196	28
Cradley CE		Reduction in capacity (105, PAN 14)
Ledbury	420	60
Much Marcle CE		Reduction in capacity (105, PAN 15)

Aylestone Catchment before Proposals

7 schools serving 1120 pupils (1330 known children) in an area of 85km²

School	Capacity	PAN
Broadlands	420	60
Hereford, St. James' CE	240	40
St. Thomas Cantilupe CE	210	30
Wetlington	196	28
Marden	175	25
Sutton	84	12
Wittington	105	15

Aylestone Catchment before Proposals

- Current Capacity 1344
- Current NOR 1120
- Current Surplus 224 (16.7%)

- 2012 Projected NOR 1109
- 2012 Projected Surplus 235 (17.5%)

Aylestone Catchment - Proposals

- **Sutton Primary & Withington Primary**
 - Amalgamation to form a new school, capacity 105 (PAN 15) from 84 (12) and 105 (15) respectively – on the new Sutton site
- **Broadlands Primary**
 - Reduce capacity from 420 (60) to 350 (PAN 50)
- **Wellington Primary**
 - Reduce capacity from 196 (28) to 140 (PAN 20)
- **Marden Primary**
 - Reduce capacity from 119 (17) to 105 (PAN 15)

Aylestone Catchment - Proposals

- **Hereford, St James' CE Primary**
 - Retain capacity of 210 (PAN 30)

- **St Thomas Cantilupe CE Primary**
 - Retain capacity of 210 (PAN 30)

Aylestone Catchment after Proposals

- Revised Capacity 1225

- 2012 Projected NOR 1191
- Revised 2012 Projected Surplus <5%

Aylestone Catchment after Proposals

7 schools serving 1170 known children in an area of 115km²

School	Capacity	PAN
Broadlands	Reduction in capacity (350, PAN 50)	
Hereford, St. James' CE	210	30
St. Thomas Cantilupe CE	210	30
Wellington	Reduction in capacity (140, PAN 20)	
Marden	Reduction in capacity (105, PAN 15)	
Sutton & Withington amalgamation	105	15
Burley Gate CE	105	15

Bishops Catchment before Proposals

5 schools serving 1008 pupils (668 known children) in an area of 66km²

School	Capacity	PAN
Hampton Dene	210	30
Lugwardine	210	30
Mordiford CE	105	15
St. Paul's CE	420	60
Fownhope, St. Mary's CE	105	15

Bishops Catchment before Proposals

- Current Capacity 1050
- Current NOR 1008
- Current Surplus 42 (4%)
- 2012 Projected NOR 956
- 2012 Projected Surplus 94 (9%)

Bishops Catchment - Proposals

- **Mordiford CE Primary & Holme Lacy Primary**
 - Amalgamation to form a new school, capacity 140 (PAN 20) from 105 (15) and 70 (10) respectively – on Mordiford site
- **Hampton Dene Primary**
 - Retain capacity of 210 (PAN 30)
- **Lugwardine Primary**
 - Retain capacity of 210 (PAN 30)

Bishops Catchment - Proposals

- **St Paul's CE Primary**
 - Retain capacity of 420 (PAN 60)
- **Fownhope, St Mary's CE Primary**
 - Retain capacity of 105 (PAN 15)

Bishops Catchment after Proposals

- Revised Capacity 1085
- 2012 Projected NOR 1021
- Revised 2012 Projected Surplus 64 (5.9%)

Bishops Catchment after Proposals

5 schools serving 910 known children in an area of 103km²

School	Capacity	PAN
Hampton Dene	210	30
Lugwardine	210	30
Mordiford CE & Holme Lacy	140	20
St. Paul's CE	420	60
Fownhope, St. Mary's CE	105	15

Whitecross Catchment before Proposals

5 schools serving 1510 pupils (1400 known children) in an area of 38km²

School	Capacity	PAN
Burghill Community	105	15
Holmer CE	420	60
Lord Scudamore	616	88
Stretton Sugwas CE	105	15
Trinity	588	88

Whitecross Catchment before Proposals

- Current Capacity 1834
- Current NOR 1510
- Current Surplus 324 (17.7%)

- 2012 Projected NOR 1494
- 2012 Projected Surplus 340 (18.5%)

Whitecross Catchment - Proposals

- **Lord Scudamore Primary**
 - Reduce capacity from 616 (88) to 420 (PAN 60)
 - New school on old Whitecross site

- **Trinity Primary**
 - Reduce capacity from 588 (84) to 420 (PAN 60)

- **Burghill Community Primary**
 - Retain capacity of 105 (PAN 15)

Whitecross Catchment - Proposals

- **Holmer CE Primary**
 - Retain capacity of 420 (PAN 60)

- **Stretton Sugwas CE Primary**
 - Retain capacity of 105 (PAN 15)

Whitecross Catchment after Proposals

- Revised Capacity 1470

- 2012 Projected NOR 1470
- Revised 2012 Projected Surplus <5%

Whitecross Catchment after Proposals

5 schools serving 1550 known children in an area of 46km²

School	Capacity	PAN
Burghill Community	105	15
Holmer CE	420	60
Lord Scudamore	Reduction in capacity (420, PAN 60)	
Stretton Sugwas CE	105	15
Trinity	Reduction in capacity (420, PAN 60)	

Wyebridge Catchment before Proposals

5 schools serving 1263 pupils (2090 known children) in an area of 65km²

School	Capacity	PAN
Holme Lacy	70	10
Little Dewchurch CE	63	9
Marlbrook	420	60
Riverside	630	90
St. Martin's	490	70

Wyebridge Catchment before Proposals

- Current Capacity 1673
- Current NOR 1263
- Current Surplus 410 (24.5%)
- 2012 Projected NOR 1186
- 2012 Projected Surplus 487 (29.1%)

Wyebridge Catchment - Proposals

- **Holme Lacy Primary & Mordiford CE Primary**
 - Amalgamation to form a new school, capacity 140 (PAN 20) from 70 (10) and 105 (15) respectively – on Mordiford site (Bishops catchment)
- **Little Dewchurch CE Primary & Kings Caple Primary**
 - Amalgamation to form a new school, capacity 70 (PAN 10) from 63 (9) and 70 (10) respectively - on Little Dewchurch site
- **St Martin's Primary**
 - Reduce capacity from 490 (70) to 420 (PAN 60)

Wyebriidge Catchment - Proposals

- **Marlbrook Primary**
 - Retain capacity of 420 (PAN 60)
- **Riverside Primary**
 - Retain capacity of 630 (PAN 90)

Wyebriidge Catchment after Proposals

- Revised Capacity 1680
- 2012 Projected NOR 1406
- Revised 2012 Projected Surplus 274 (16.3%)

Wyebriidge Catchment after Proposals

5 schools serving 2240 known children in an area of 67km²

School	Capacity	PAN
Little Dewchurch CE & Kings Caple	70	10
Marlbrook	420	60
Riverside	630	90
St. Martin's	Reduction in capacity (420, PAN 60)	
Much Birch CE	140	20

St Mary's Catchment before Proposals

3 Roman Catholic schools serving 329 pupils

School	Capacity	PAN
Our Lady's RC	210	30
St. Francis Xavier's RC	210	30
St. Joseph's RC	140	20

St Mary's Catchment before Proposals

- Current Capacity 560
- Current NOR 529
- Current Surplus 31 (5.5%)
- 2012 Projected NOR 513
- 2012 Projected Surplus 47 (8.4%)

St Mary's Catchment - Proposals

- **St Joseph's RC Primary & Brampton Abbots CE**
 - Amalgamation to form a new ecumenical school, capacity 210 (PAN 30) from 140 (20) and 140 (20) respectively – on Brampton Abbots site (John Kyrie catchment)
- **St Francis Xavier's RC Primary**
 - Retain capacity of 210 (PAN 30)
 - New school on St Mary's RC High site
 - Timescale to be determined
- **Our Lady's RC Primary**
 - Retain capacity of 210 (PAN 30)

St Mary's Catchment after Proposals

- Revised Capacity 420
- 2012 Projected NOR 410
- Revised 2012 Projected Surplus <5%

St Mary's Catchment after Proposals

2 Roman Catholic schools serving 329 pupils

School	Capacity	PAN
Our Lady's RC	210	30
St. Francis Xavier's RC	210	30